



Case

STUDY

TOTAL TRAFFIC EXOPAVE

Church of St John the Evangelist
Pathway



MARKET SECTOR:

Environmental



LOCATION:

St. John the Evangelist,
Church Lane,
YO60 7EG



CONTRACTOR:

Vertigrow Ltd

The

BACKGROUND

In January 2017 Herle Hasner Myerscough contacted Geosynthetics to help with a special project.

Familiar with the TTE® product from her native Denmark, Herle wanted to use it to create a new pathway at her local church.

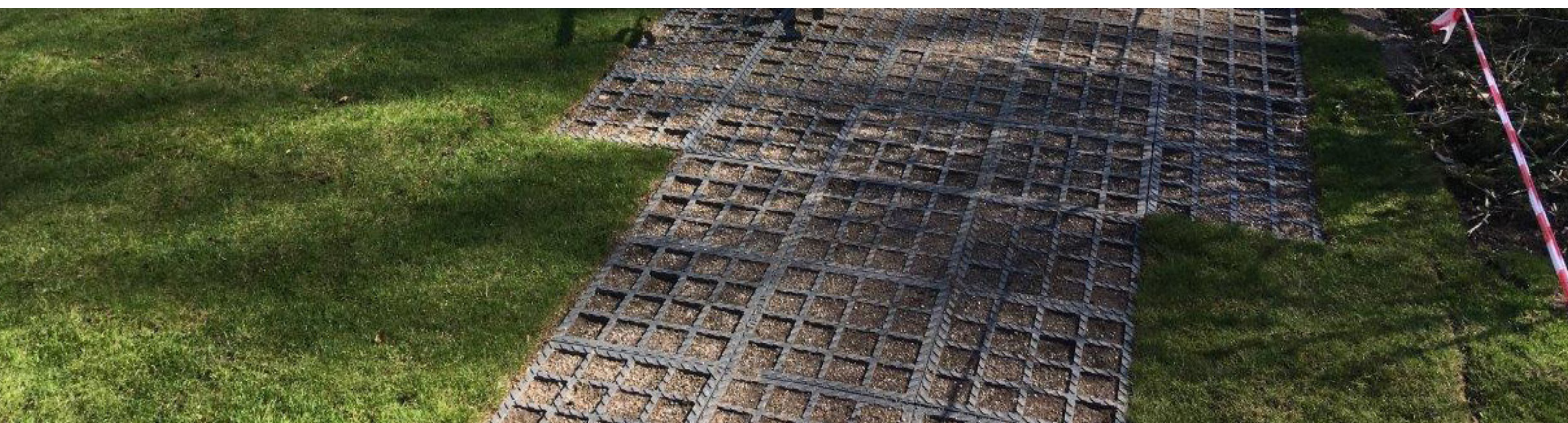
Our Client's

REQUIREMENTS

A sustainable solution for a reinforced pathway

The L- shaped route would make access easier for disabled people and visitors on foot.

The churchyard itself is situated amongst farmland and houses in the village and therefore the surface needed to be sympathetic to this and as grass like as possible.



Our Value Engineered SOLUTION

A meeting was held onsite to discuss the application. Being relatively easy to install Herle was able to use a local contractor Vertigrow.

With no vehicles using the pathways the installation only required a small amount of excavation and then a bedding layer of grit/soil. A sample of TTE® was left for the church committee to view. Some months passed while planning permission and consent from the Diocese were obtained. There were obstacles and delays but in the end it was Herle's determination to get the project moving, along with her tape measure, that saw the installation completed in March 2018.

The weather then played its part first with snow and then just as the grass seed germinated June saw the start of the longest dry spell in years. By July all the grass had died and the whole site was looking dry and parched. Another attempt to replant would be made in the autumn or spring of the following year. By April 2019 the grass was still patchy so reseeded with a mixture of seed & compost was undertaken after loosening the soil in the units. Over the summer the grass started filling in nicely and by the end of that year the TTE® looked as though it had always been there.

The project is a thank you from Herle for being allowed to give her husband his final resting place in the village churchyard where he grew up. We think the end result is a fitting tribute.

"I am not a fan of gravel, tarmac and crazy paving in Churchyards, but still wanted to create an even, level and indestructible surface holding grass.

The end result has impressed all who use it. It has given me the opportunity to say thank you to the Church goers with something of quality - and to give my husband a memorial in the Churchyard he was so very fond of."

HERLE HASNER MYERSCOUGH

