



Case

STUDY

TOTAL TRAFFIC EXOPAVE

Cambridge Science Park
Gravel Surface Reinforcement



MARKET SECTOR:
Commercial WW



LOCATION:
Cambridge Science Park
Milton Road, Cambridge, CB4 0F



CONTRACTOR:
Hiretest Limited



ENGINEER:
MLM Group

The

BACKGROUND

This commercial development forms part of the science park and comprises a three storey high building on a landscaped podium built over undercroft parking.

The concealment of the parking has been one of the main objectives and has influenced the way the building is positioned on site.

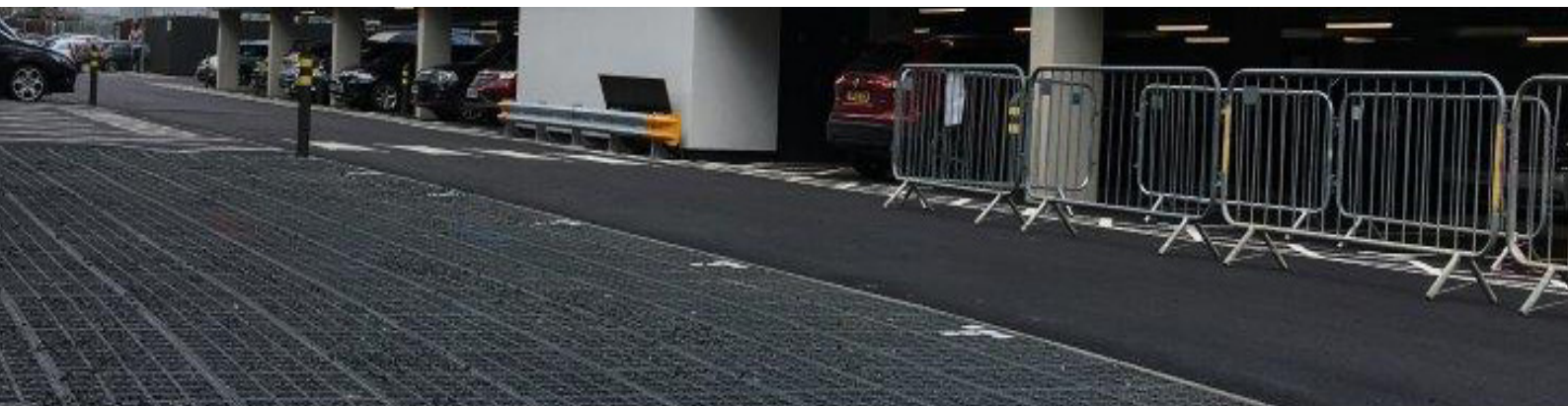
Our Client's

REQUIREMENTS

A sustainable solution for a reinforced gravel surface using TTE®.

The building has been recessed from all sides of the site boundary and this allowed for some additional external parking bays.

A reinforced gravel surface was required and various products were being considered. Lighter duty materials had been used in other areas of the science park with mixed results.



Our Value Engineered **SOLUTION**

Geosynthetics Ltd were contacted to discuss what options were available. When the project managers learnt about the qualities of our TTE Heavy Duty Block they decided it would be perfect for their requirements.

The TTE product can be filled with grass or gravel. The addition of TTE paving brick inserts that fit inside the TTE cells can be used to increase the strength or in this case, be painted white and used for demarcation. The surface was installed and filled with gravel and now provides additional, useful parking to the main car park.

