

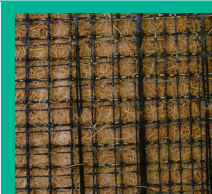
East Coast Range

Geosynthetics Limited offers a complete range of biodegradable ECB's (Erosion Control Blankets) which are designed to provide slope protection whilst vegetation is establishing. The East Coast Range out perform all alternative biodegradable solutions in the market.



Geosynthetics

Engineered Solutions



Properties	Standard	ECSC -2	ECC-2	ECC-2B	ECC-3
Materials					
Netting	-	Top: Heavyweight UV Stabilised Polypropylene 19mm x 19mm Opening Bottom: Lightweight Photodegradable Polypropylene 12mm x 12mm Opening	Heavyweight UV Stabilized Polypropylene	Leno Weave Jute 100% Biodegradable	Top & Bottom: Heavyweight 8# PMSF UV Stabilized Polypropylene 12mm x 12mm Opening Middle: Heavyweight 24# PMSF UV Stabilized Polypropylene 10mm x 12mm Opening
Matrix	-	70% Agriculture Straw 208.9 g/m ² 30% Coconut Fibre 89.5g/m ²	100% Coir Fibre 298 g/m ²	100% Coir Fibre 298 g/m ²	100% Coir Fibre 298.4 g/m ²
Thread	-	Degradable 37.5mm Stitch Spacing	UV Stabilized 37.5mm Stitch Spacing	Biodegradable 37.5mm Stitch Spacing	UV Stabilized 37.5mm Stitch Spacing
Index Value Properties*					
Mass/Unit Area	ASTM D6475	320.4 g/m ²	351.3 g/m ²	406.9 g/m ²	501.8 g/m ²
Thickness	ASTM D6525	10.2mm	6.6mm	7.9mm	10.9mm
Tensile Strength MD	ASTM D6818	2.6 kN/m	3.8 kN/m	3.5 kN/m	11.7 kN/m
Elongation MD	ASTM D6818	31.3%	20%	10.9%	24.7%
Tensile Strength TD	ASTM D6818	2.2 kN/m	2.9kN/m	2.4 kN/m	11.5 kN/m
Elongation TD	ASTM D6818	22.4%	20%	16%	15.7%
Light Penetration	ASTM D6567	13%	16%	10%	13.5%
Water Absorption	ASTM D1117	339%	308%	225%	113%
*May differ depending upon raw material variations					
Design Values					
Manning N	-	0.15pa	0.15pa	0.15pa	0.24pa
C-Factors	ASTM D6459				
Slope Length	-	3:1-2:1	3:1-2:1	3:1-2:1	3:1-2:1
< 15m	-	0.028	0.023	0.053	0.007
15m - 30m	-	0.059	0.054	0.084	0.015
> 30	-	0.090	0.084	0.114	0.050
* Large-Scale Results Obtained by 3rd Party GAI Accredited Independant Laboratorty					
Unvegetated Shear Stress	ASTM D6460	125pa	110pa	108pa	177pa
Unvegetated Velocity	ASTM D6460	2.4m/sec	2.1m/sec	2.7m/sec	4.2m/sec
Roll Sizes					
Width	-	2.3m	2.3m	2.3m	2.3m
Length	-	36.6m	36.6m	36.6m	36.6m

This information corresponds to our current knowledge on the subject. It is offered solely to provide possible suggestions for your own experimentation. It is not intended, however, to substitute for any testing you may need to conduct to determine for yourself the suitability of our products for your particular purposes. This information may be subject to revision as new knowledge becomes available. Since we cannot anticipate all variations in actual end use conditions, Geosynthetics Limited makes no warranties and assumes no liabilities in connection with this information. Nothing in this publication is to be considered as a licence to operate under or a recommendation to infringe any patent right.