



Case Study

Pyramat /Armormax

Location:

Tilney-Cum-Islington
Norfolk

Client:

Middle Level
Commissioners

Project:

Saint Germans Pumping
Station



Contractor:

COSTAIN



Geosynthetics Limited

Fleming Road
Harrowbrook Ind. Est
Hinckley
LE10 3DU
Tel. 01455 617 139
sales@geosyn.co.uk
www.geosyn.co.uk

HISTORICALLY, the English Fens were wetlands, they were virtually all drained by the 19th Century. The Fens are slowly sinking due to the drainage systems and shrinkage of the peaty ground; to date they have sunk up to 4 metres in the last 150 years.

This in turn has meant that the drainage system needs to work harder, and so the original 1934 pumping station now needs replacing. To enable the new-pumping station to be built and tested the tidal drain channel needed temporary realignment, and the associated spilling needed scour protection. The Pyramat was used with percussion anchors as a cost effective alternative to the more traditional concrete mattress specified. In addition to the spillway, the Pyramat was also approved for use along the water margins of the tidal drain upstream from the new pumping station. Here the product had to be installed along a tidal bank with a curved profile and up to a 9m tidal range, the flexible nature of the materials made for a neater finish. The employer's designer acknowledged this as more in keeping with the surrounding environment it is green to the eye and



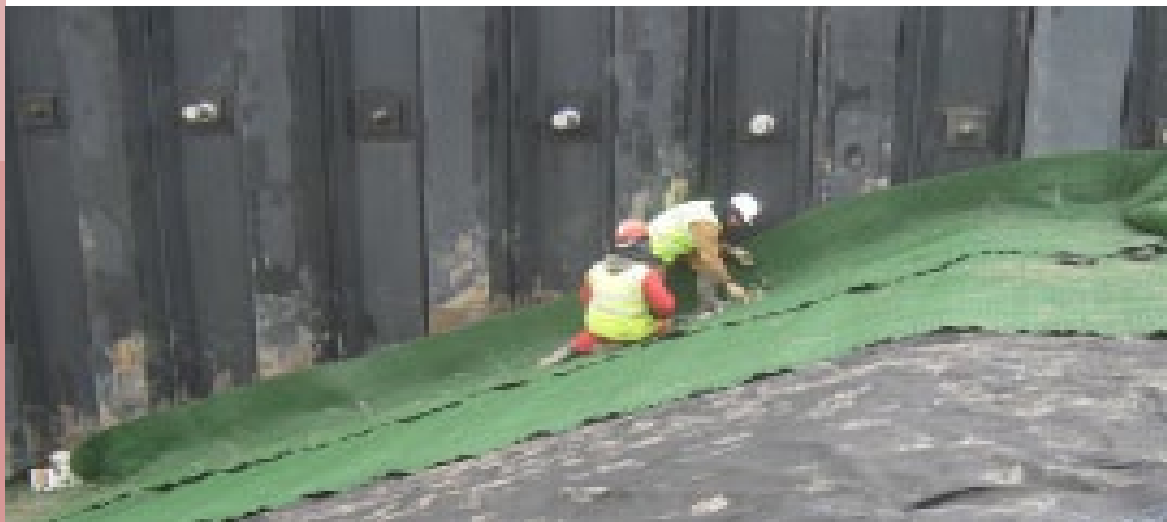
encourages vegetation which ultimately creates a stronger more stable solution. On the 8th May, 2012 the new St Germans Pumping Station won the Borough Council of Kings Lynn & West Norfolk Mayors Award for 'Design in the environment commercial new build' and also received the overall 'Gold Award' as competition winner topping approximately fifty entries in numerous classes.

We acknowledged this (Pyramat) as more in keeping with the surrounding environment; it is green to the eye and encourages vegetation which ultimately creates a stronger product.

Quote from designer

For soft bank construction, I would certainly use this again.

Mark Tootle CENG MICE MSc Beng, Costain Limited





Geosynthetics
Engineered Solutions

WWW.GEOSYN.CO.UK
CALL: 01455 617139

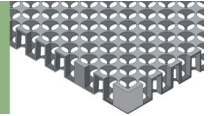
2 in 1
Landscaping Fabric



Gas Membrane
Radon, CO2, Methane,
Hydrocarbon Control



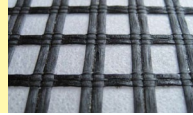
RoofCell
Sub Surface Drainage
And Water Storage



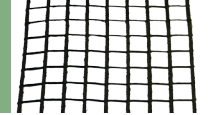
Alert®
Contamination Indicator



Geoglas®
Asphalt Reinforcement



Stratagrid
Soil Reinforcement Geogrid



AquaBlock®
Water Containment Liners



Geomembrane
Impermeable Membrane



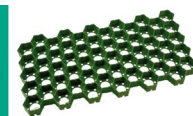
Strataweb
Slope Stabilisation



Bentotex® GCL
Geosynthetic Clay Liner



Golpla
Grass & Gravel Paving System



T-Block
Modular Retaining System



Cellweb® TRP
Tree Root Protection



Golpla Pregrown
Ready To Lay Paving System



Telegrid
Woven Polyester Geogrid



DuoDrain®
Composite Drainage Product



Interlock
Extruded HDPE Geogrids



Televev
High Strength
Woven Geotextile



East Coast
Biodegradable
Erosion Control



Knotblock®
Japanese Knotweed Barrier



Tenax
Soil Reinforcement Solutions



Ekotex®
Non Woven Geotextile



Landlok
Turf Reinforcement Mat



Total Traffic Exopave
Heavy Duty Paver



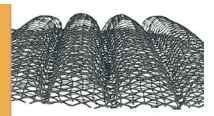
Fiberforce®
Equestrian Geotextile



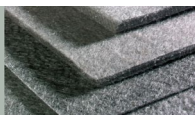
Nicospan
Erosion Control



Trinter
Erosion Control Mat



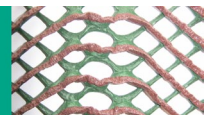
Fibertex
Non Woven Geotextile



Rhyno®
Woven Geotextile



Turfmesh
Grass Reinforcement



Flexitex
Textile Shuttering



RockBox
Gabion Mattresses



RootBlock
Root Barrier

