



Case Study

Golpla Pre-Grown

Royal William Yard

Location:

Royal William Yard
Plymouth
Devon
PL1 3RP

Project:

Royal William Yard
Car Park



Contractor:

AtelierBUILD

atelierBUILD

Engineer:

Hydrock



Installer:

W H Bond



Architect:

Gillespie Yunnie

Geosynthetics Limited

Fleming Road
Harrowbrook Ind. Est
Hinckley
LE10 3DU
Tel. 01455 617 139
sales@geosyn.co.uk
www.geosyn.co.uk

Royal William Yard was designed by Victorian architect Sir John Rennie and constructed between 1825 and 1831. Steeped in history, the site contains the largest collection of Grade 1 listed military buildings in Europe. The site has lots to offer visitors with a variety of high-end commercial and residential uses including leisure, office and retail.

With the popularity of the location, car parking was becoming a major issue for the site operator. They appointed Hydrock Engineering to source a solution.

Aside from the necessity for a natural grass surface, some of the parking areas were quite steep and there were several mature trees that required protection. Due to its proven track record, the Golpla Pre-Grown and Cellweb® Tree Root Protection systems were specified for the project.

Work to clear what had previously been an old neglected cottage garden started in October 2014 and a stone sub-base was installed. Grass surfacing was favoured for the parking areas with a coloured asphalt road linking the areas together.

Geosynthetics visited site regularly during November and December to offer technical support to the installation teams. Following a trouble-free installation, the grass quickly began to establish and after some fertiliser



was applied, it flourished despite the low winter temperatures.

The project was completed in January 2015 and the site was opened for use the following month, by which time the Golpla pre-grown was fully established.

Using Golpla Pre-Grown provided a consistent grass finish without germination issues and its natural aesthetic set the desired tone for the site's many visitors.

"The choice of Golpla Pre-Grown was made after carefully balancing the need for an economic solution with the desire to match the beautiful historic setting. The Golpla Pre-Grown made an immediate visual impact on the competition, the green contrasted well with the yellow stone. It's relatively immediate use was an important factor. With a degree of maintenance the car park is now a flourishing facility that compliments rather than impacts upon the yard."

Guy Jackson, AtelierBuild





Geosynthetics
Engineered Solutions

WWW.GEOSYN.CO.UK
CALL: 01455 617139

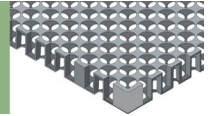
2 in 1
Landscaping Fabric



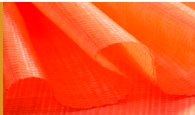
Gas Membrane
Radon, CO2, Methane,
Hydrocarbon Control



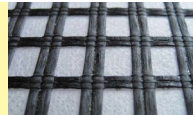
RoofCell
Sub Surface Drainage
And Water Storage



Alert®
Contamination Indicator



Geoglas®
Asphalt Reinforcement



Stratagrid
Soil Reinforcement Geogrid



AquaBlock®
Water Containment Liners



Geomembrane
Impermeable Membrane



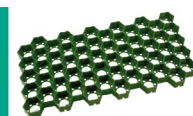
Strataweb
Slope Stabilisation



Bentotex® GCL
Geosynthetic Clay Liner



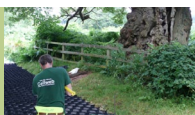
Golpla
Grass & Gravel Paving System



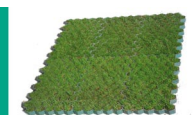
T-Block
Modular Retaining System



Cellweb® TRP
Tree Root Protection



Golpla Pregrown
Ready To Lay Paving System



Telegrid
Woven Polyester Geogrid



DuoDrain®
Composite Drainage Product



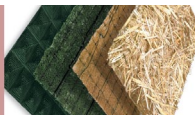
Interlock
Extruded HDPE Geogrids



Televev
High Strength
Woven Geotextile



Erosion Control
Comprehensive Range



Knotblock®
Japanese Knotweed Barrier



Tenax
Soil Reinforcement Solutions



Ekotex®
Non Woven Geotextile



Landlok
Turf Reinforcement Mat



Total Traffic Exopave
Heavy Duty Paver



Fiberforce®
Equestrian Geotextile



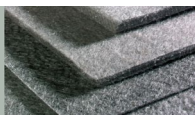
Nicospan
Erosion Control



Trinter
Erosion Control Mat



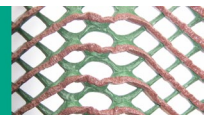
Fibertex
Non Woven Geotextile



Rhyno®
Woven Geotextile



Turfmesh
Grass Reinforcement



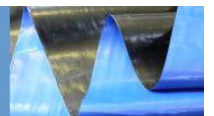
Flexitex
Textile Shuttering



RockBox
Gabion Mattresses



RootBlock
Root Barrier



INVESTORS
IN PEOPLE

Bronze